



**Mechtric** PTY LTD

**PRODUCT OVERVIEW**

*Engineering Solutions  
for a powerful future*

# ABOUT MECHTRIC

Established in 1964, MECHTRIC is a 100% Australian-owned business that specialises in the supply and distribution of a wide range of industrial automation equipment, switchgear, electric motor starters, and variable speed drives. We also offer AC and DC electric motors, servo systems, reduction gearboxes, hazardous and industrial signaling products. Our product range is carefully selected from renowned manufacturers in Europe, Asia, the USA, and Australia, and is supported by the local knowledge from our experienced technicians and customer service teams.

With a rich history of serving the Australian industry for 60 years, we have branches in five states with a dedicated team committed to providing exceptional service. Our goal is to offer high-quality products from trusted manufacturers at competitive prices, while also adding value to your business.

We stock an extensive range of engineering products, comprising of more than 10,000 items in a range of product groups:

- **Motors and drives**
- **Audible and visual signals**
- **Industrial automation**
- **Control & instrumentation**
- **Power quality & energy management**

## CONTROL AND CIRCUIT PROTECTION

Mechtric are the Australian distributors of the Lovato Electric range of contactors, motor protection circuit breakers, overload relays, miniature circuit breakers, switch disconnectors, fuse holders and surge protection devices.

## PROCESS CONTROLS AND SWITCHES

We supply a wide range of industrial process controls and switches including Delta Electronics temperature controllers, Lovato Electric level switches, Fantini Cosmi level switches, flow switches and pressure controls. We also represent a comprehensive range of photoelectric, inductive, capacitive and ultrasonic sensors from DataSensing.

## MOTOR STARTERS AND VARIABLE SPEED DRIVES

Mechtric has a solution to most motor starting and control applications from DOL starters to servo motor drives.

### **Our range includes:**

- Lovato Electric DOL, Star-Delta starters & soft starters
- Delta Electronics variable speed drives, including IP66, HVAC, motor pump drives, special application drives and servo systems.
- We can supply a complete solution mounted in enclosure with protection and control devices.

## MOTORS AND GEARBOXES

### **Electrical Motors**

Our range of electric motors include:

- Three-phase electric motors in aluminium alloy and cast-iron frames (All our three-phase motors exceed MEPS efficiency standards)
- Single-phase electric motors
- Brake motors
- Servo motors
- DC motors
- Flameproof motors and brakes

We supply the following brands: Mechtric, COEL, Drive systems, Delta, Euromotori, Shinmyung.

### **Gearboxes**

Our range of gearboxes include:

- Worm gearboxes
- Inline helical gearboxes
- Bevel-helical gearboxes
- Planetary gearboxes
- Right angle bevel gearboxes
- Mechanical variators

## INDUSTRIAL AUTOMATION

**At Mechtric, we can provide complete industrial automation solutions:**

- Delta Electronics PLC's, HMI's, VSD's & servo systems
- Lovato Electric smart relays, contactors, control & signalling units, limit switches & soft starters
- DataSensing inductive & photoelectric sensors
- Mechan Controls machine guard safety switches & relays
- EAE enclosure solutions
- Degson terminals
- Sirena stack lights
- PLC support

# ABOUT MECHTRIC



## ENCLOSURES AND PANEL COMPONENTS

Mechtric stocks a full range of EAE powdercoated galvanised steel wall and floor mounting enclosures, stainless-steel wall mounting enclosures, galvanised steel and stainless-steel terminal boxes, GRP and ABS enclosures.

### Also including:

- Plastic enclosure fans & anti-condensation heaters, thermostats & cable ducting.
- Pratley Junction boxes, Exe GRP & aluminium junction boxes & Exd cable glands
- Degson terminals
- EAE PanelMaster LV Modular Switchgear system for IEC 61439 Standards up to Form 4B

## AUDIBLE AND VISUAL SIGNALLING

Mechtric supplies a comprehensive range of signalling devices for industrial, mining, oil & gas, commercial and fire protection applications from leading brands including E2S, Sirena, Clifford & Snell and Sirencos. With products ranging from panel mounting buzzers and pilot lights to high power disaster warning sirens. We also specialise in sirens and beacons suitable for hazardous area applications (explosion proof & intrinsically safe) as well as beacons for aircraft obstacle warning.

### Flashing Lights and Beacons

Mechtric supplies a wide range of industrial beacons utilising LED technology, xenon strobe and traditional flashing or rotating filament lamp. Products available for fire, industrial, hazardous area, marine and civil applications.

### Warning Sirens & Wide Area Signaling

Our range of sirens include electronic sounders, speech and tone sounders, electric motor driven sirens,

electronic and electro-mechanical buzzers, horns and bells. With products suitable for low cost security applications through to high power emergency and warning sirens with voice messages and sound output to cover several kilometers.

## ENERGY MANAGEMENT

Mechtric offers a range of solutions to assist with energy management and to improve power quality.

- Lovato Electric energy meters & metering instruments with Synergy local or cloud based energy monitoring software.
- Power factor correction components including Lovato power factor controllers.
- Power factor correction capacitors.
- Enerdoor passive and active harmonic filters.
- Enerdoor EMI filters & sine wave output filters for variable speed drive applications.
- Polylux input and output reactors for harmonics mitigation & motor protection on variable speed drive applications.
- Lovato generator controllers & automatic transfer switch controllers.



Lovato Electric has been in operation since 1922 and has evolved to encompass a fusion of electronics, automation, and software in the present day. The company's extensive product range is meticulously designed, engineered, tested, and manufactured in accordance with the most stringent quality standards. A dedicated team of designers and researchers employs state-of-the-art software tools to develop cutting-edge and dependable products. Furthermore, an internal test laboratory, accredited with full ISO compliance with IEC & UL Certification conducts tests in adherence to both national and international standards.

					
<b>MOTOR PROTECTION &amp; CONTROL</b>	<b>MOTOR PROTECTION CIRCUIT BREAKERS</b>	<b>CONTACTORS</b>	<b>MOTOR PROTECTION RELAYS</b>	<b>ELECTROMECHANICAL STARTERS &amp; ENCLOSURES</b>	<b>SOFT STARTERS</b>
					
<b>CONTROL &amp; SIGNALLING</b>	<b>PUSHBUTTONS &amp; SELECTOR SWITCHES</b>	<b>EMERGENCY STOP, 30mm FLAT DOUBLE/TRIPLE ACTUATORS</b>	<b>LIMIT, MICRO &amp; FOOT SWITCHES</b>	<b>SAFETY MODULES</b>	<b>ROTARY CAM SWITCHES</b>
					
<b>CIRCUIT PROTECTION &amp; ISOLATION</b>	<b>SWITCH DISCONNECTORS</b>	<b>FUSE HOLDERS AND FUSES</b>	<b>MINIATURE &amp; RESIDUAL CIRCUIT BREAKERS</b>	<b>SURGE PROTECTION DEVICES</b>	<b>MODULAR CONTACTORS &amp; MODULAR DEVICES</b>
					
<b>AUTOMATION &amp; CONTROL</b>	<b>TIME RELAYS</b>	<b>MONITORING RELAYS</b>	<b>LEVEL CONTROLS</b>	<b>GENERAL PURPOSE RELAYS</b>	<b>MICRO PLCs &amp; HMI</b>
					
<b>ENERGY MANAGEMENT</b>	<b>METERING INSTRUMENTS &amp; CTS</b>	<b>CTS &amp; METERING ACCESSORIES</b>	<b>AUTOMATIC TRANSFER SWITCH CONTROLLERS</b>	<b>ENGINE &amp; GENERATOR CONTROLLERS</b>	<b>SYNERGY ENERGY MANAGEMENT SOFTWARE</b>



Delta Electronics (Australia) Pty Ltd operates as a subsidiary of Delta Electronics Inc., a renowned worldwide supplier of power and thermal management products and solutions. Being a part of the esteemed Delta Group, Delta Australia upholds its mission statement, which centers around delivering forward-thinking, eco-friendly, and energy-efficient solutions to contribute to a brighter future. Delta's diverse business categories encompass Power Electronics, Automation, and Infrastructure. Notably, Delta Australia is experiencing rapid growth in various sectors, including Industrial Automation, Power Quality, Display and Control Room.

VARIABLE SPEED DRIVES	AC DRIVES	MOTOR PUMP DRIVE	IP66 DRIVES	SPECIAL APPLICATION
MOTION CONTROL	AC SERVO DRIVES	BACKPLANE SERVO SYSTEM	AC SERVO MOTORS	ROBOTS
CONTROL	PLC-PROGRAMMABLE LOGIC CONTROLLERS	COMPACT PLC	HUMAN MACHINE INTERFACES	INDUSTRIAL FIELDBUS SOLUTION
FIELD DEVICES	TEMPERATURE CONTROLLERS	INDUSTRIAL POWER SUPPLIES	MANAGED & UNMANAGED SWITCHES	WIRELESS COMMUNICATIONS



E2S holds the prestigious position of being the foremost independent manufacturer globally when it comes to high-performance audible and visual signals, manual call points, and push buttons for life safety applications. E2S products cater to a wide range of environments, including commercial, industrial, marine, onshore, and offshore locations, both standard and hazardous. With a remarkable blend of cutting-edge technology and more than 30 years of engineering experience, they have developed an unparalleled selection of life-saving signals and controls that meet the most rigorous global standards.

HAZARDOUS AREA	VISUAL	AUDIBLE	COMBINATION	COMBINATION	MANUAL CALL POINTS
FIRE & INDUSTRIAL	VISUAL	AUDIBLE	COMBINATION	COMBINATION	MANUAL CALL POINTS
WIDE AREA	AUDIBLE	SIREN ARRAY	ALARM HORN	SPEAKER ARRAY	MANUAL CALL POINTS






Since its establishment, the Sirena plant in Italy has manufactured and delivered an impressive 50 million devices, solidifying the company's standing as a benchmark in the industry and a trusted brand associated with reliability and quality. Sirena is dedicated to pursuing significant strategic objectives that foster continuous expansion into international markets. In line with these aspirations, Sirena continuously introduces noteworthy products, further underscoring the company's unwavering commitment to research and innovation.

INDUSTRIAL	ACOUSTIC DEVICES	VISUAL DEVICES	COMBINATION	SIGNAL TOWERS
				
COMMERCIAL	WEARABLE DEVICES	BREAK DOWN SERVICES	EMERGENCY SERVICES	ACCESSORIES & SPARE DOMES
				



SITI was established in Italy in 1967, excelling in manufacturing gearboxes. They have extensive production capabilities, an efficient commercial network, exceptional product quality, and a flexible organisational structure. Their diverse production range enables them to provide suitable solutions for countless applications. With 70% of their revenue generated from foreign markets, SITI continuously strive to expand their product offerings. SITI actively develop new product lines to penetrate high-growth industrial sectors, such as renewable energy and waste recycling, which require robust solutions for heavy-duty applications.

I SERIES	MI SERIES	U SERIES	MU SERIES	R SERIES
				
Worm gearbox solid shaft input	Worm gearbox IEC motor input	Worm gearbox universal mount solid shaft input	Worm gearbox universal mount IEC motor input	Right angle helical gearboxes
MNHL/NHL SERIES	MBH/BH SERIES	SR SERIES	MK SERIES	NRG SERIES
				
Inline Helical Gearbox IEC motor input & solid shaft input	Bevel Helical Gearbox IEC motor input & solid shaft input	Single stage primary producer	Mechanical speed variators	Planetary Gearboxes



DATA SENSING is the combined business unit of DATALOGIC Sensor & Safety - Machine Vision and M.D. MICRO DETECTORS. With 50 years of experience each, these two companies have a rich history in sensor technology. DATA SENSING specialises in the development, manufacturing, and supply of Machine Vision, Sensors, and Safety solutions. Their focus is on addressing automation challenges, including machine vision deep learning, sensors, and safety measures. They are dedicated to supporting industrial automation, encompassing everything from production processes to internal goods logistics.

<p><b>M18 PHOTOSWITCHES S5N / S5</b></p>	<p><b>NEW S3N SERIES PHOTOSWITCHES</b></p>	<p><b>COMPACT S8 PHOTOSWITCHES</b></p>	<p><b>SLOT SWITCHES</b></p>
			
<p><b>LONG RANGE PHOTOSWITCHES</b></p>	<p><b>CONTRAST &amp; LUMINESCENCE</b></p>	<p><b>INDUCTIVE MULTIVOLTAGE PROXIMITY SWITCHES</b></p>	<p><b>CYLINDRICAL CAPACITIVE SWITCHES</b></p>
			
<p><b>SAFETY LIGHT CURTAINS SH4</b></p>	<p><b>SAFETY LASER SCANNER SLS</b></p>	<p><b>ULTRASONIC SENSOR</b></p>	<p><b>FULL METAL ULTRASONIC SWITCHES</b></p>
			



ELEKTROTEKNIK

EAE Elektrotechnik established their comprehensive enclosure range in 1995. EAE Elektrotechnik specialises in LV Type Tested Licensed Modular Enclosures (PanelMaster), Type Tested Empty Enclosures (E-Kabin), and Rack Cabinets (KabinPlus). The EAE company strives to become a symbol of reliability, continuity, and quality of manufacture. With the expertise of their skilled and knowledgeable staff, the EAE Group has emerged as one of the leading companies in the electrical products market. EAE has five manufacturing sites in Turkey and has global representation with valued distribution partners.

IEC 61439-1 / 2 STANDARD UP TO FORM 4B  
PANELMASTER



FLOOR STANDING ENCLOSURES  
E-KABIN S SERIES



WALL MOUNTED ENCLOSURES  
E-KABIN XM SERIES SS



WALL MOUNTED ENCLOSURES  
E-KABIN T & XT SERIES



WALL MOUNTED ENCLOSURES  
E-KABIN M SERIES



EAE E-LINE BUSBAR SYSTEMS





Based in Tasmania, Australia, Novaris Pty Ltd is positioned to provide you with the highest quality electrical surge protection products in the world. We leverage the expertise of our employees to provide consulting, and manufacturing products that suit the needs of your organisation, first time, every time. Novaris products have proven capability in the protection of electrical disturbances and our innovative team of R&D engineers are able to design surge protection solutions for the most demanding applications. The advantage of Novaris' success is its capable and enthusiastic staff chosen for their ability to be innovative and in their willingness to work in a leading edge technological environment.

POWER PROTECTION	INSTRUMENTATION & PROCESS CONTROL	ETHERNET & CCTV PROTECTION	COAXIAL & RF PROTECTION
 <ul style="list-style-type: none"> <li>■ Surge Diverters</li> <li>■ Surge Circuit Breakers</li> <li>■ Surge Filters</li> <li>■ Series Surge Protector</li> <li>■ Spark Gaps</li> <li>■ DC Surge Diverters</li> </ul>	 <ul style="list-style-type: none"> <li>■ Slimline Signal Line Protectors</li> <li>■ Slimline Surge Protector</li> <li>■ Slimline Series Surge Protectors</li> <li>■ Threaded Signal Line Protectors</li> <li>■ Adapter for SLTx</li> <li>■ HS Current Signal Line Protector</li> <li>■ Multiline Protectors</li> <li>■ Serial Port Protectors</li> <li>■ Load Cell Protector</li> <li>■ C-Bus™ Protection Device</li> </ul>	 <ul style="list-style-type: none"> <li>■ Cat6 and PoE Surge Protection</li> <li>■ Power &amp; Signal Protectors</li> <li>■ Coaxial CCTV Protectors</li> </ul>	 <ul style="list-style-type: none"> <li>■ RF Equip. Protection up to 3GHz</li> <li>■ RF Equip. Protection up to 6GHz</li> <li>■ RF Equip. Protection Tuned Stub</li> <li>■ RF Equip. Protection up to 50kW</li> <li>■ Cable Bonding Kit</li> </ul>
TELEPHONE LINE PROTECTION	EARTH CLAMPING AND BONDING	RAILWAY SIGNAL PROTECTION	HAZARDOUS AREA PROTECTION
 <ul style="list-style-type: none"> <li>■ KP – KRONE-LSA® MDF – 1 Pair / 10 Pair</li> <li>■ MPP – RJ Modular Plug Protection</li> </ul>	 <ul style="list-style-type: none"> <li>■ Surge Cathodic Decoupler</li> <li>■ Earth Clamp 20kA &amp; 100kA</li> <li>■ Cable Bonding Kit</li> </ul>	 <ul style="list-style-type: none"> <li>■ Slimline Surge Protector</li> <li>■ GDT Surge Protector</li> <li>■ Track Circuit Protectors</li> <li>■ Railway Signalling Protectors</li> <li>■ 2P Surge Filters/IT and DC power</li> <li>■ Points Protection Surge Diverters</li> <li>■ DC Surge Diverter Low Voltage</li> </ul>	 <ul style="list-style-type: none"> <li>■ Hazardous Area Slimline Signal Line Protectors</li> <li>■ Instrumentation Hazardous Area Slimline Series Surge Protectors</li> <li>■ Hazardous Area Threaded Signal Line Protectors</li> <li>■ Adapter for SLTx</li> <li>■ Hazardous Area Load Cell</li> </ul>



# OUR PARTNERS:

## PRATLEY

- Junction Boxes
- Cable Glands
- Terminals
- Industrial & Hazardous



### GENERAL JUNCTION BOXES



### EXPLOSIVE ATMOSPHERES



### ACCESSORIES



## Clifford & Snell

- Yodalarm
- Sounders & Beacons
- Combination Units
- Hazardous Areas



### ACOUSTIC DEVICES



### VISUAL DEVICES



### COMBINATION





# OUR PARTNERS:



- Pendant Switches
- Rotary Limit Switches
- Rotating Power Outlets
- DC Contactors



## PENDANT SWITCHES



## ROTARY LIMIT SWITCHES



## D.C. CONTACTORS TECNO SERIES



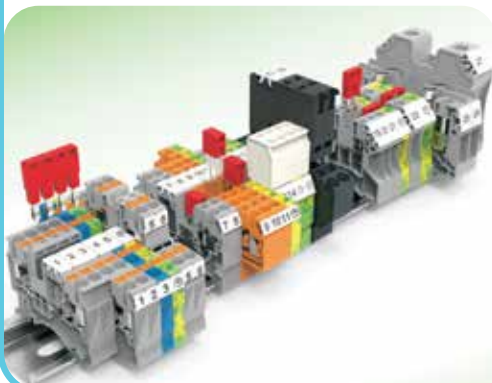
## SLIP RINGS PM SERIES



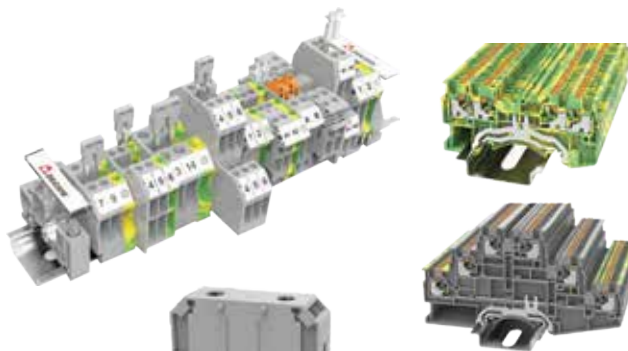
## INDUSTRIAL RADIO REMOTE CONTROLS



- Terminals
- Terminal Blocks
- Relays & sockets
- Remote I/O



## DIN-RAIL TERMINALS



## I/O MODULE



## RELAYS





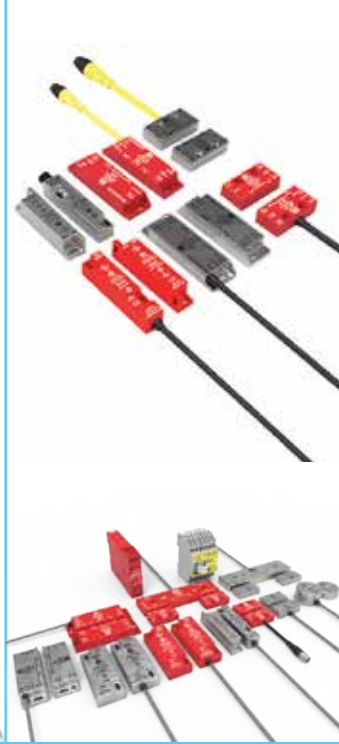
# OUR PARTNERS:

## MECHAN CONTROLS

- Safety Switches
- Machine Guard Safety
- Safety Relays
- Light Curtains



### SAFETY SWITCHES



### SAFETY RELAYS



### RFID SAFETY SWITCHES



### SOLENOID INTERLOCK



### RFID SAFETY SYSTEM



## FantiniCosmi

- Flow Controls
- Level Controls
- Pressure Switches
- Thermostats



### FLOW CONTROLS



### THERMOSTATS



### PRESSURE SWITCHES



### FLOAT SWITCH



### LEVEL CONTROLS



### CONDUCTIVE LIQUIDS PROBES





# OUR PARTNERS:



- Hour Meters
- Monitoring Devices
- Process Indicators
- Timers & Counters

## HOUR METERS



## TIMERS



## PROCESS INDICATORS



- Transformers
- Line Reactors
- Voltage Regulators
- Auto Transformers

## TRANSFORMERS



## LINE REACTORS



## VOLTAGE REGULATOR



- Wide Area Signalling
- Motorised Sirens
- Manual Hand Sirens
- Electronic Sounders

## HAZARDOUS



## NON - HAZARDOUS





# MOTORS

## Mechtrics MOTORS

- Squirrel Cage Induction Motors
- Three Phase (↑315kW) & Single Phase (↑2.2kW)
- IP55 Protection
- Cast Iron & Aluminium Construction available

YE3 - CAST IRON 3PH



YEY - ALUMINIUM 3PH



YML - 1PH



- Electro Magnetic fail safe brake
- AC & DC Brakes
- Two Speed options
- Flameproof Brake

AC BRAKE MOTOR



DC BRAKE MOTOR



FLAMEPROOF BRAKE



- 12V, 24V 48V, 120V
- DC Motors for battery supply
- Motor control options available

DC MOTORS



DC MOTORS



DC MOTORS





# MOTORS



- Servo motors up to 15kW
- Synchronous Reluctance Motor - IE5 Efficiency
- Integrated Variable Speed Drive Motor

A3 SERVO MOTOR



PMa SYNCHRONOUS RELUCTANCE MOTOR



MOTOR PUMP DRIVE



- Hazardous Area Motors
- Single & Three Phase
- Two Speed motors
- Custom application
- IECEX Certifications

IECEX MOTOR



IECEX MOTOR



CUSTOM APPLICATIONS



- Fractional HP motors
- AC/DC motors
- 3Ph & 1Ph Motors
- Low to high reduction ratios available

GEARED MOTORS



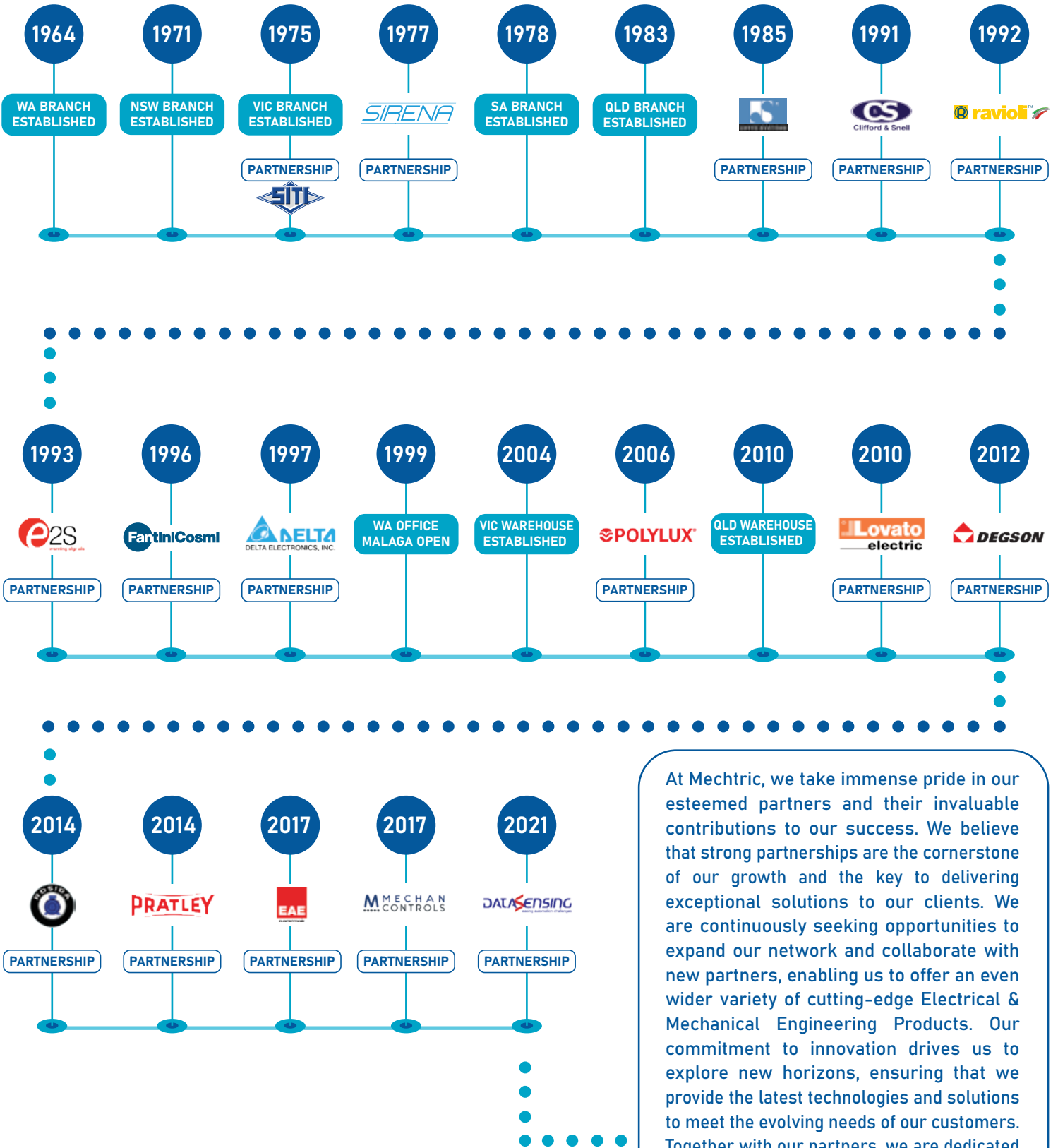
GEARED MOTORS



GEARED MOTORS



# MECHTRIC TIMELINE



At Mechtric, we take immense pride in our esteemed partners and their invaluable contributions to our success. We believe that strong partnerships are the cornerstone of our growth and the key to delivering exceptional solutions to our clients. We are continuously seeking opportunities to expand our network and collaborate with new partners, enabling us to offer an even wider variety of cutting-edge Electrical & Mechanical Engineering Products. Our commitment to innovation drives us to explore new horizons, ensuring that we provide the latest technologies and solutions to meet the evolving needs of our customers. Together with our partners, we are dedicated to pushing the boundaries of excellence and shaping the future of the industry with the goal to add value to our customer's business.





### **PERTH (Head Office)**

---

14 Lorries Court  
Malaga WA 6090

P: (08) 9248 0410

E: [sales@mehtronic.com.au](mailto:sales@mehtronic.com.au)

E: [accounts@mehtronic.com.au](mailto:accounts@mehtronic.com.au)

### **ADELAIDE**

---

72 Wingfield Road  
Wingfield SA 5013

P: (08) 8347 2499

E: [sasales@mehtronic.com.au](mailto:sasales@mehtronic.com.au)

### **MELBOURNE**

---

21 Kimberly Road  
Dandenong South, VIC 3175

P: (03) 9706 4599

E: [vicsales@mehtronic.com.au](mailto:vicsales@mehtronic.com.au)

### **SYDNEY**

---

U5, 40 Bessemer Street  
Blacktown NSW 2148

P: (02) 9676 1671

E: [nswsales@mehtronic.com.au](mailto:nswsales@mehtronic.com.au)

### **BRISBANE**

---

U6, 57 Mortimer Road  
Acacia Ridge QLD 4110

P: (07) 3274 3327

E: [qldsales@mehtronic.com.au](mailto:qldsales@mehtronic.com.au)

***PROUDLY AUSTRALIAN  
OWNED & OPERATED***



**Free Call: 1800 252 995**

E: [sales@mehtronic.com.au](mailto:sales@mehtronic.com.au)

[www.mehtronic.com.au](http://www.mehtronic.com.au)